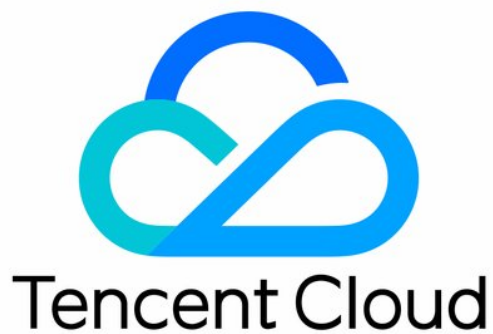


Low-code Interactive Classroom

Best Practice

Product Documentation



Copyright Notice

©2013-2024 Tencent Cloud. All rights reserved.

Copyright in this document is exclusively owned by Tencent Cloud. You must not reproduce, modify, copy or distribute in any way, in whole or in part, the contents of this document without Tencent Cloud's the prior written consent.

Trademark Notice



All trademarks associated with Tencent Cloud and its services are owned by Tencent Cloud Computing (Beijing) Company Limited and its affiliated companies. Trademarks of third parties referred to in this document are owned by their respective proprietors.

Service Statement

This document is intended to provide users with general information about Tencent Cloud's products and services only and does not form part of Tencent Cloud's terms and conditions. Tencent Cloud's products or services are subject to change. Specific products and services and the standards applicable to them are exclusively provided for in Tencent Cloud's applicable terms and conditions.

Contents

Best Practice

Integration with Scheduling System

Integration with Account System

Integration with Recording and Playback

Integration with Courseware Module

Best Practice

Integration with Scheduling System

Last updated : 2023-07-13 17:12:18

Note :

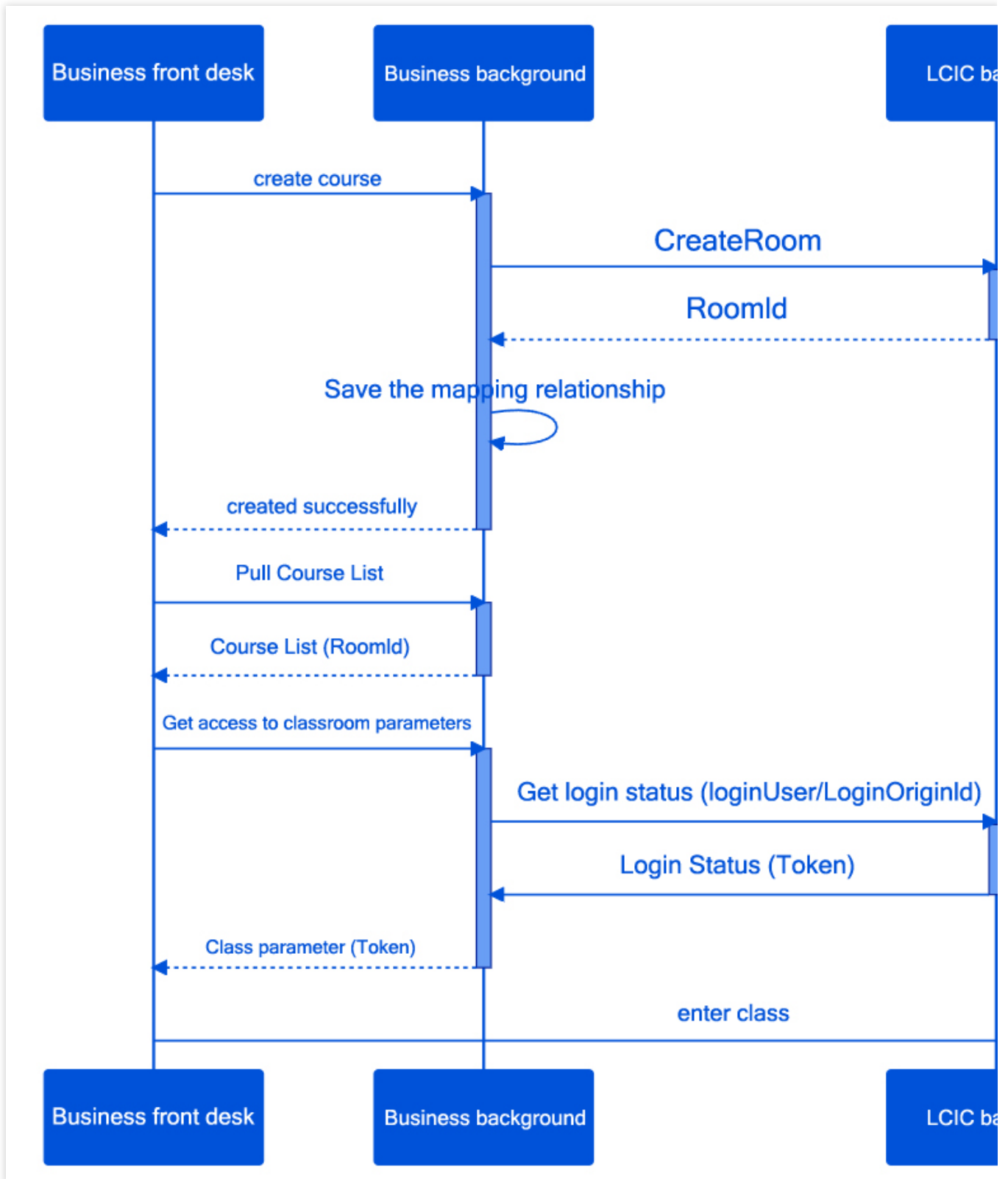
Through the integration of the class scheduling system, the teacher/student class schedule can be realized. This is also an important basic function of the teaching platform.

To realize the curriculum as shown in the figure below and enter the classroom through the curriculum, we need to implement the logic of the curriculum in the business layer first.

How the courses of the course scheduling system are related to the low-code classroom, and how to complete the seamless classroom entry, this article will introduce the combination of the course scheduling system and the classroom for reference.

	Monday 24	Tuesday 25	Wednesday 26	Thursday 27	Friday 28
08:00	Language 08:00	Physical education 08:00		Art 08:00	
09:00	Math 09:00		History 09:00		
10:00	English 10:00				
11:00					
12:00					
13:00					
14:00	Computer 14:00	Computer 14:00	Computer 14:00	Computer 14:00	Computer 14:00
15:00					
16:00					
17:00					
18:00					

Integration process example

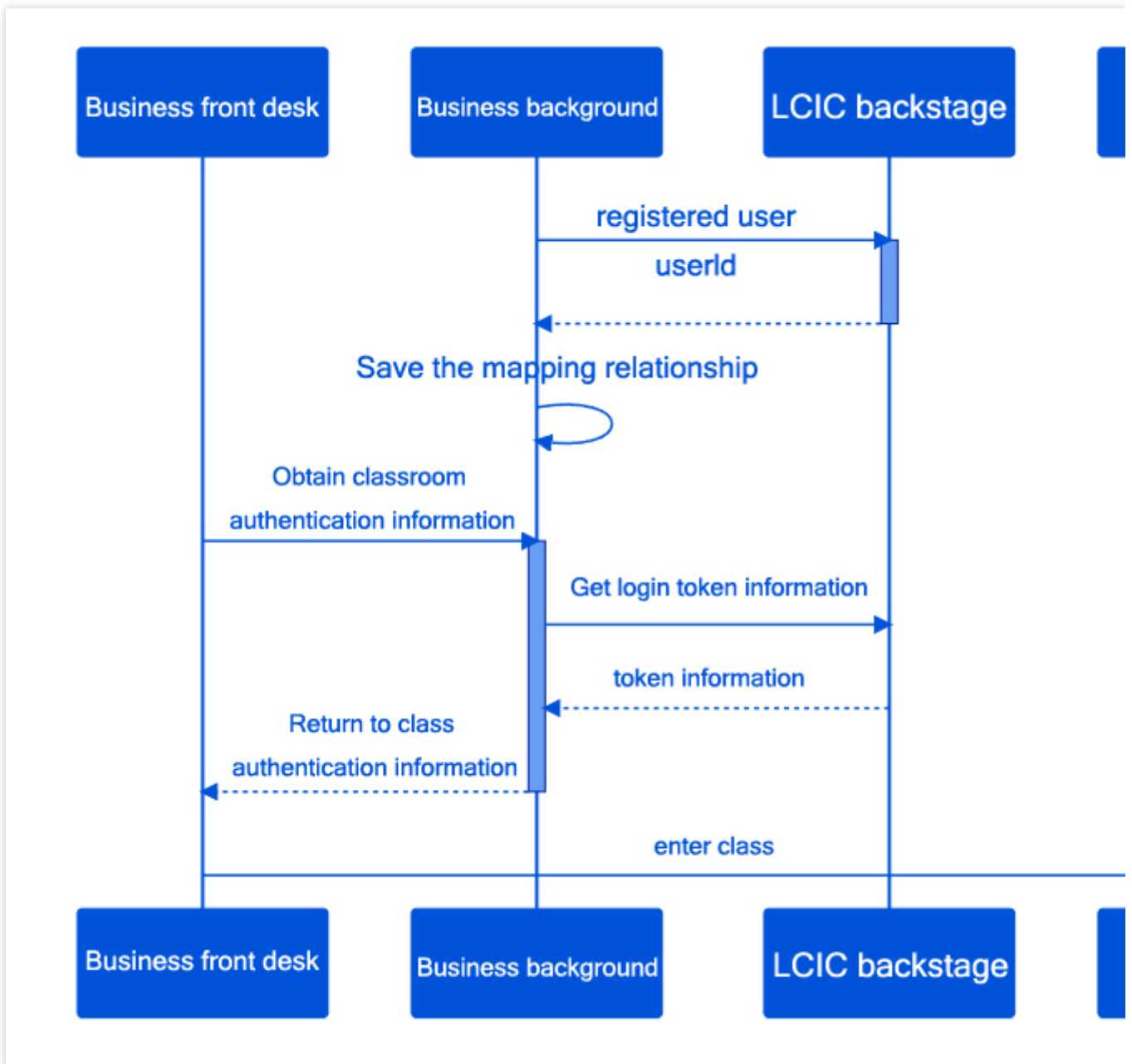


Integration with Account System

Last updated : 2023-07-13 17:13:16

Note :

The LCIC does not need to obtain sensitive business account information such as mobile phone numbers. Complete the registration of the account through the nickname and avatar, and store the mapping relationship between the obtained unique id and the user of the business system, so as to complete the opening of the existing account system.



Integration with Recording and Playback

Last updated : 2023-07-13 17:13:51

Note :

A complete classroom process, including pre-class scheduling, in-class teaching, and post-class playback. This article will use how to integrate with the business to complete the integration of classroom playback logic for reference by the business side.

Interface example

the list

The class list page is shown in the figure below:

details

Click View under the list operation column to enter the details page:

It can be seen that the business layer needs to be able to see the classroom history after the classroom is over. It can be broken down into the following abilities:

list

classroom information

playback file information

search

delete

details

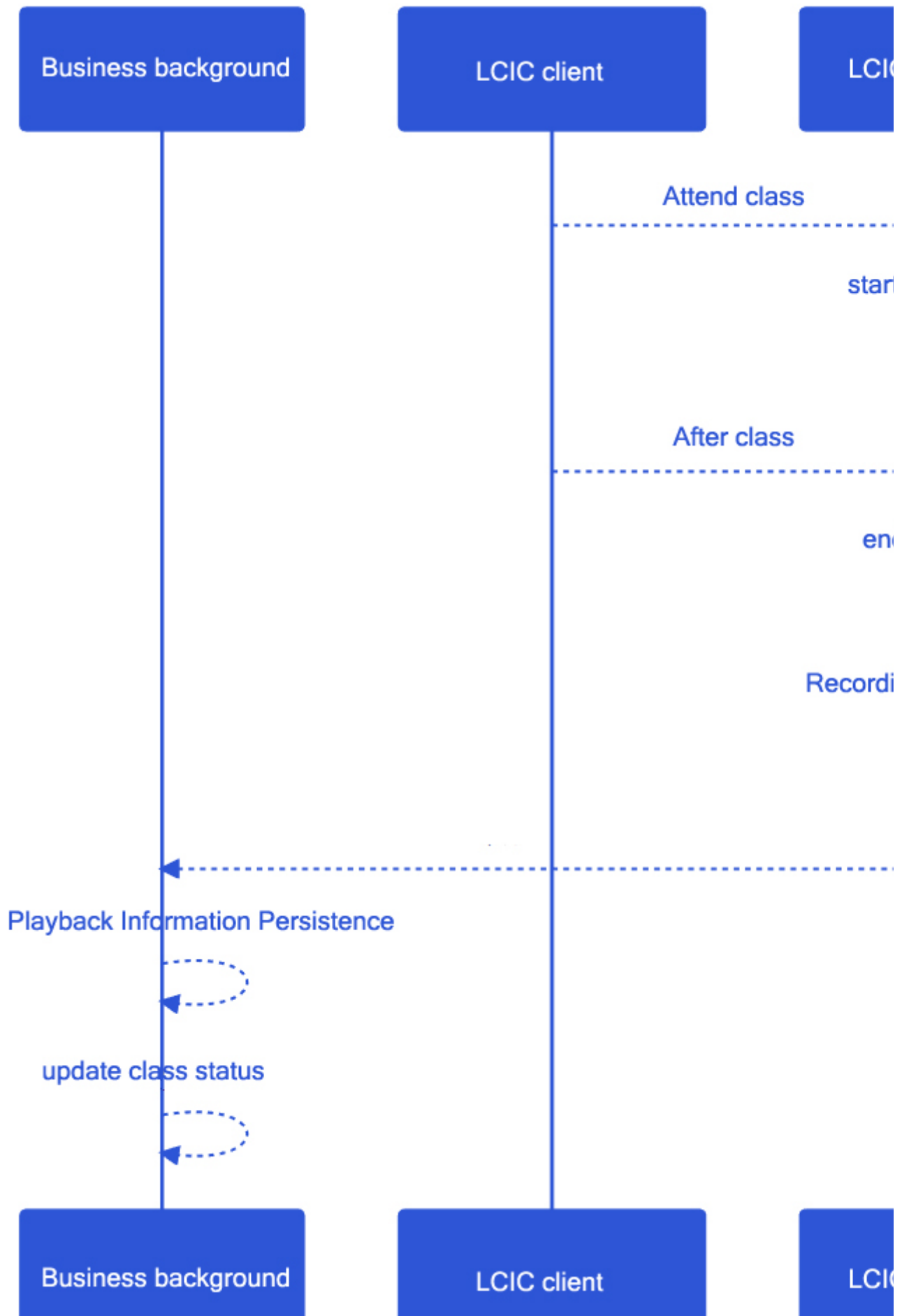
classroom information


playback address

delete

download

Sequence diagram of connection between playback recording and business layer





For the business layer, it is only necessary to complete the processing of the classroom playback notification in the connection of the callback service.

Callback service processing failed

If the callback is not received correctly due to a service exception, our callback service will make multiple attempts, but will give up trying if the multiple attempts still fail.

At this point, the business layer can obtain the playback address through the [class information](#) interface.

Integration with Courseware Module

Last updated : 2023-07-13 17:14:25

The LCIC provides relevant APIs for courseware management, which can be seamlessly integrated with business systems.

Note:

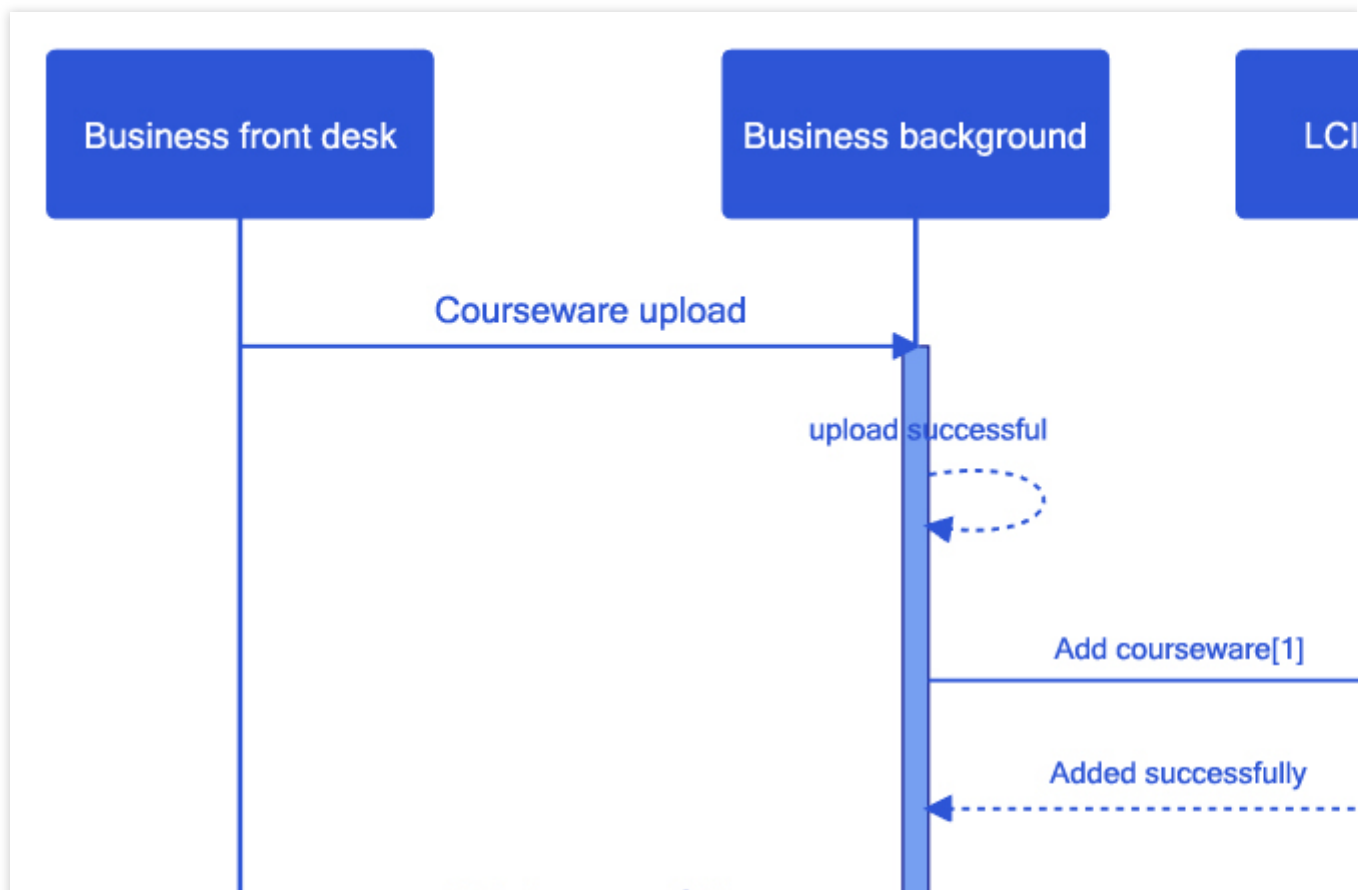
Why upload courseware in advance?

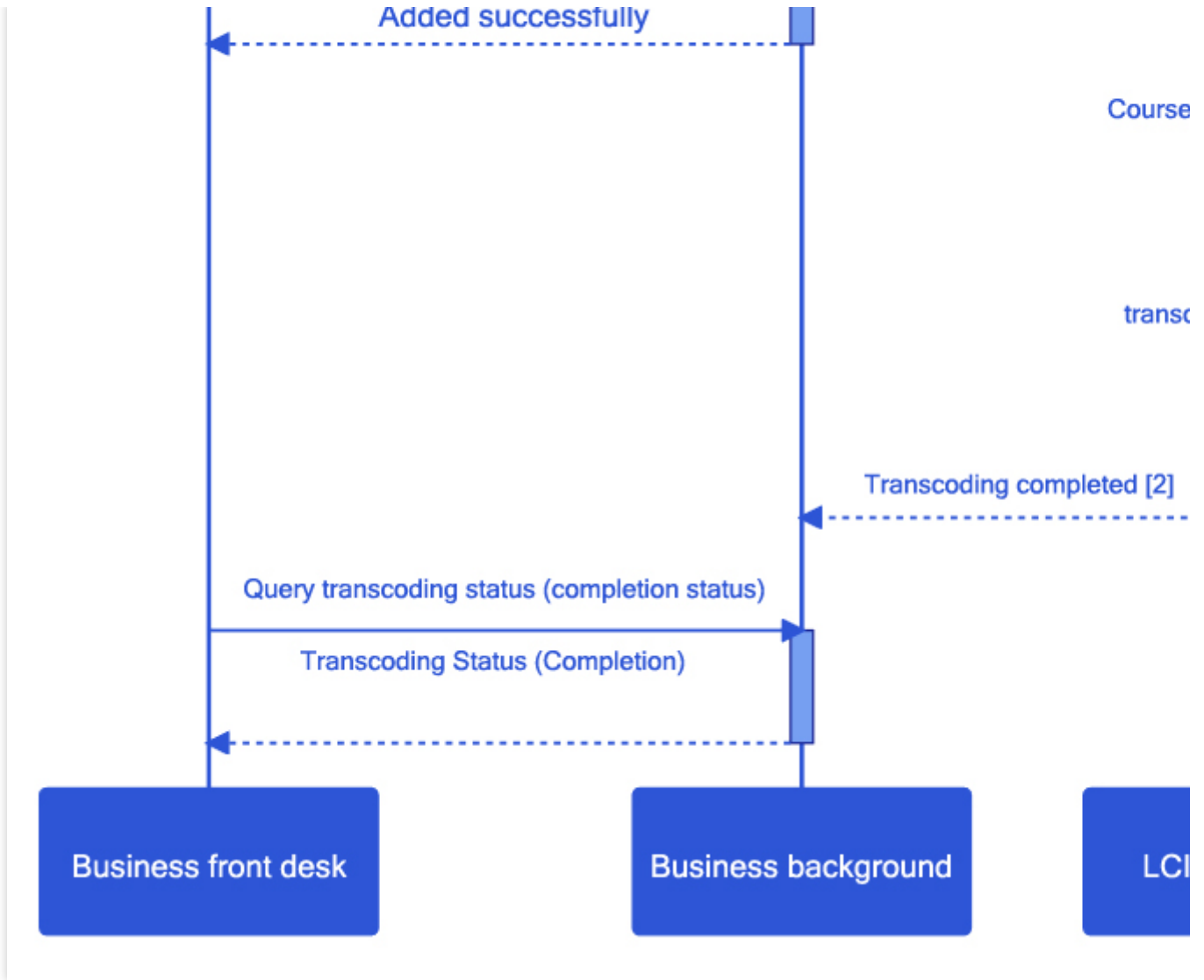
Although the courseware upload is supported in the class, the PPT in the class needs to be transcoded in order to realize the interactive function. Courseware upload and transcoding will take some time.

In order not to affect the smooth progress of the teacher's class, **we recommend** implementing the courseware management module in the business system to support the addition, deletion, checking and modification of courseware.

The following is the integration process:

Integration process





[1] [Courseware add interface](#)

[2] Status Notification - Transcoding Complete

Courseware Management

Courseware Type

Note :

When integrating the courseware management module ([1] courseware add interface), the following transcoding type and size limit requirements should be followed.

transcoding type

transcode_type	meaning	File types include
----------------	---------	--------------------

0	No transcoding required (default)	bmp jpg jpeg png gif
1	need transcoding	doc docs ppt pptx pdf
2	Video files that need to be transcoded	mp4 3gp mpg mpeg 3g2 avi flv wmv h264 m4v mj2 mov ogg ogv rm qt vob web
2	Audio files that need to be transcoded	mp3 wav wma aac flac m4a oga opus

Courseware Preview

Note:

The courseware preview function is not required.

If you need to preview the existing courseware before class, we have prepared the courseware preview source code for the business layer to combine with the business system.

Interface Description

source address

parameter	value	required
isppt	Whether dynamic ppt, 1 yes 0 no	Yes
total	total page number	Yes

课件url	transcode_url	Yes
-------	---------------	-----

预览示例

[Static PDF](#)

[Dynamic PPT](#)