

TencentDB for SQL Server

Getting Started

Product Documentation



Copyright Notice

©2013-2019 Tencent Cloud. All rights reserved.

Copyright in this document is exclusively owned by Tencent Cloud. You must not reproduce, modify, copy or distribute in any way, in whole or in part, the contents of this document without Tencent Cloud's the prior written consent.

Trademark Notice



All trademarks associated with Tencent Cloud and its services are owned by Tencent Cloud Computing (Beijing) Company Limited and its affiliated companies. Trademarks of third parties referred to in this document are owned by their respective proprietors.

Service Statement

This document is intended to provide users with general information about Tencent Cloud's products and services only and does not form part of Tencent Cloud's terms and conditions. Tencent Cloud's products or services are subject to change. Specific products and services and the standards applicable to them are exclusively provided for in Tencent Cloud's applicable terms and conditions.

Contents

Getting Started

- Creating an Instance and Connecting to a Database

- Creating and Connecting to a TencentDB for SQL Server Instance (from a Windows-based CVM Instance)

- Creating and Connecting to a TencentDB for SQL Server Instance (from Local machine)

Getting Started

Creating an Instance and Connecting to a Database

Last updated : 2019-11-06 20:21:13

You can manage the database in the TencentDB for SQL Server Console.

Creating an Instance

Log in to the [TencentDB for SQL Server Console](#), click **Create** in the instance list, select the region, network, and specification of the instance, and click **Buy Now** to create the instance.

Creating a Database

Click an instance name to enter the instance details page. Select **Database Management** > **Create a Database**, enter the database name, select the character set. If you need to authorize an account for the database now, select "Authorize Accounts", select the corresponding database, and then set the permissions. Currently, the permissions are divided into read-write and read-only. After confirming that everything is correct, click "OK".

[Instance Details](#)[System Monitoring](#)[Account Management](#)[Database Management](#)[Backup Management](#)[Slow log](#)[Create a database](#)

Database Name

Status

Character Set

Creation Time

Bind Account

No database info. [Create a database](#)

Create Database

✕

Database Name

Demo



Contain letters, numbers and underscores and start with a letter, with a length of up to 32 chars

Support Character Set

Chinese_PRC_CI_AS ▾

Authorize Accounts



Do Not Authorize Accounts



Authorize Accounts

Account List

Unauthorized Account

No data yet

Authorize...

Permissi...



Remarks

Remarks

Up to 256 chars for remarks

OK

Cancel

Set Database Permissions

After successfully creating a database, you can authorize an account for it or modify the authorization. To do so, click "Set Permissions" in the **Operation** column of the database:

Instance Details System Monitoring Account Management **Database Management** Backup Management Slow log

Create a database

Database Name	Status	Character Set	Creation Time	Bind Account	Description	Operation
test	Running	Chinese_PRC_CI_AS	2019-07-31 19:56:07		--	Set Permissions Delete

Click > or < to add or remove permissions for the account.

Modify permission ×

Database: test

Account List:

Unauthorized account

>

<

Authorized account	Permissions

[OK](#) [Cancel](#)

Renaming a Database

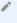

You can move the cursor near the **database name** and the edit icon will appear. Click the icon to rename the database.

+ Create Restart More Operations ▾

<input type="checkbox"/>	Instance ID/Instanc...	Running Status	Project	Database Type	MEM	Storage Space	Network	Availability Zone
<input type="checkbox"/>	mssql-nubeaodh 65f63d87-0836-...	Running	DEFAULT PROJECT	SQL Server 2008 ...	2GB	10GB	Default-VPC	Guangzhou Zone 2

Modifying Database Description

You can move the cursor near the database **description** and the edit icon will appear. Click the icon to update the description:

Instance Details	System Monitoring	Account Management	Database Management	Backup Management	Slow log	
Create a database						
Database Name	Status	Character Set	Creation Time	Bind Account	Description	Operation
test 	Running	Chinese_PRC_CI_AS	2019-07-31 19:56:07		-- 	Set Permissions Delete

Deleting a Database

You can delete a database by clicking **Delete** in the **Operation** column.

Instance Details	System Monitoring	Account Management	Database Management	Backup Management	Slow log	
Create a database						
Database Name	Status	Character Set	Creation Time	Bind Account	Description	Operation
test	Running	Chinese_PRC_CI_AS	2019-07-31 19:56:07		--	Set Permissions Delete

Creating and Connecting to a TencentDB for SQL Server Instance (from a Windows-based CVM Instance)

Last updated : 2019-10-25 11:49:53

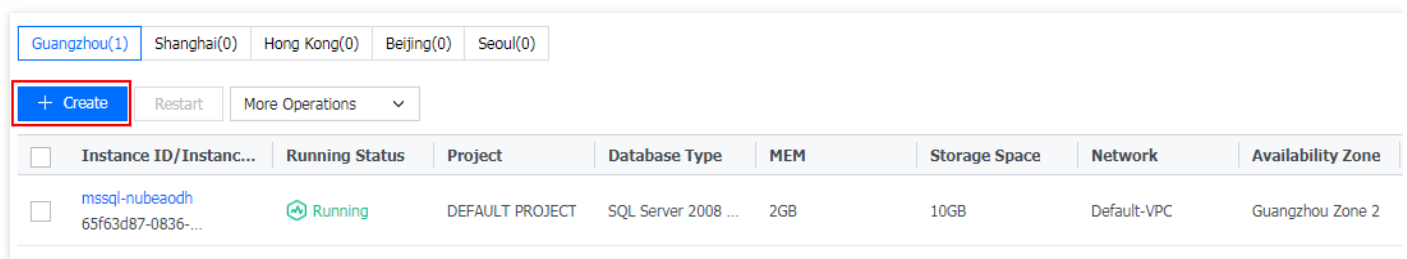
This document describes how to create a TencentDB for SQL Server instance, connect to the database instance using SQL Server Management Studio (SSMS) in a Windows CVM instance and run a simple query, as well as how to delete the database instance.

If you need to connect to a TencentDB for SQL Server instance using SSMS locally, see [Creating and Connecting to a TencentDB for SQL Server Instance \(from Local Machine\)](#).

You must have a Tencent Cloud account before creating a TencentDB for SQL Server instance. For more information about how to register a Tencent Cloud account, see [here](#).

Creating a TencentDB for SQL Server Instance

1. Log in to the [TencentDB Console](#) and select **SQL Server** > **Instance List*.



2. Click **+ Create** and select desired database configurations on the purchase page. After confirming everything is correct, click **Buy Now**.

- **Billing Method:** Pay-as-you-go.
- **Region and AZ:** For more information, see [Regions and AZs](#). This document uses Guangzhou and Guangzhou Zone 3 as an example.
- **Network Type** Basic network and private network are supported. For the difference between VPC and basic network, see [Network Environment](#). This document uses the basic network as an example.
- **Database Version:** SQL Server 2008 R2, SQL Server 2012, and SQL Server 2016 SP1 are supported. Available versions may vary in different availability zones. This document uses SQL Server 2012 as an

example.

- o Select an instance specification and required capacity.
- o Select the quantity and length of purchase.

TencentDB for SQL Server

Billing Mode

Region
[Detailed Comparison](#)

The cloud service products in different regions cannot communicate with each other through private network. Thus, it is recommended to select the region that is closest to your customers to minimize the access latency.

Availability Zone

Network Type

4093 subnet IPs in total, with 4091 available

You can also go to the console to [Create VPC](#) or [Create Subnet](#)
In the **Guangzhou** region and under **VPC Default-VPC**, the servers that can be connected via private network are : 0

Instance version

Database Version

Instance Specs QPS reference value: 2100

Disk GB

Project List

Quantity

Total Fee **0.13 USD/hour** ([Billing Details](#))

3. Return to the SQL Server instance list and view the instance just created. If the running status is **running**, the instance has been successfully created.
4. In the **Operation** column of the instance, click **Manage** to enter the instance details page.
5. On the instance details page, click **Account Management** > **Create an Account** and enter relevant information on the account creation page that pops up. Check that all the information is correct and click **OK**.

The account name and password entered in this step will be used when connecting to TencentDB for SQL Server. Please store them properly. This document uses "test" as an example.

Create a database ✕

Database Name:*
Contain letters, numbers and underscores and start with a letter, with a length of up to 32 chars

Supported Character Sets* ▼

Authorize Account Not Authorize Account
 Authorize Account

Remarks
Up to 256 chars for remarks

6. On the instance details page, select **Database Management** > **Create a Database** and enter relevant information on the database creation page that pops up. Check that all the information is correct and click **OK**.

In this step, grant the database's **read-write** or **read-only** permission to the account created in the

previous step.

Create a database ×

Database Name:*
Contain letters, numbers and underscores and start with a letter, with a length of up to 32 chars

Supported Character Sets*

Authorize Account Not Authorize Account
 Authorize Account

Account List:

Unauthorized account	Authorized account	Permissions
<div style="border: 1px solid #ccc; height: 100px;"></div>	<div style="border: 1px solid #ccc; height: 100px;"></div>	<div style="border: 1px solid #ccc; height: 100px;"></div>

Remarks
Up to 256 chars for remarks

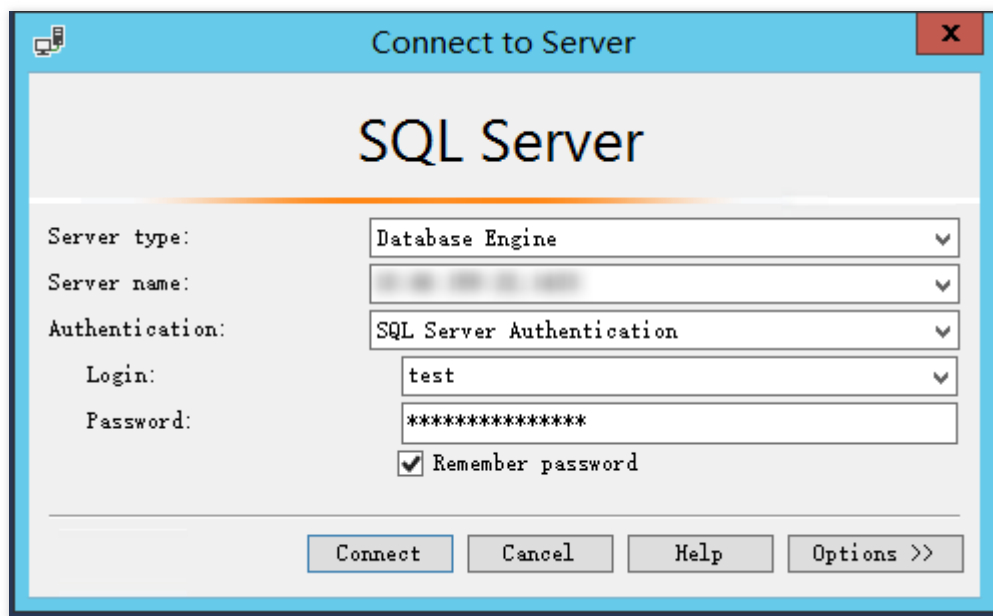
Connecting to a TencentDB for SQL Server Instance (from a Windows-based CVM Instance)

1. Log in to Tencent Windows CVM. If you do not have a Tencent Windows CVM instance, see [Getting Started with Windows-based CVM](#). This document uses 64-bit Windows Server 2012 R2 Standard as an example.
2. Download and install [SQL Server Management Studio](#) (SSMS) in the Windows-based CVM instance. For more information on SSMS, see Microsoft's official document - [Use SQL Server Management Studio](#).
3. On the TencentDB for SQL Server instance details page, click **Instance Details** to view the private IP and port number of the instance. **The private IP and port number here will be used when connecting to**

TencentDB.

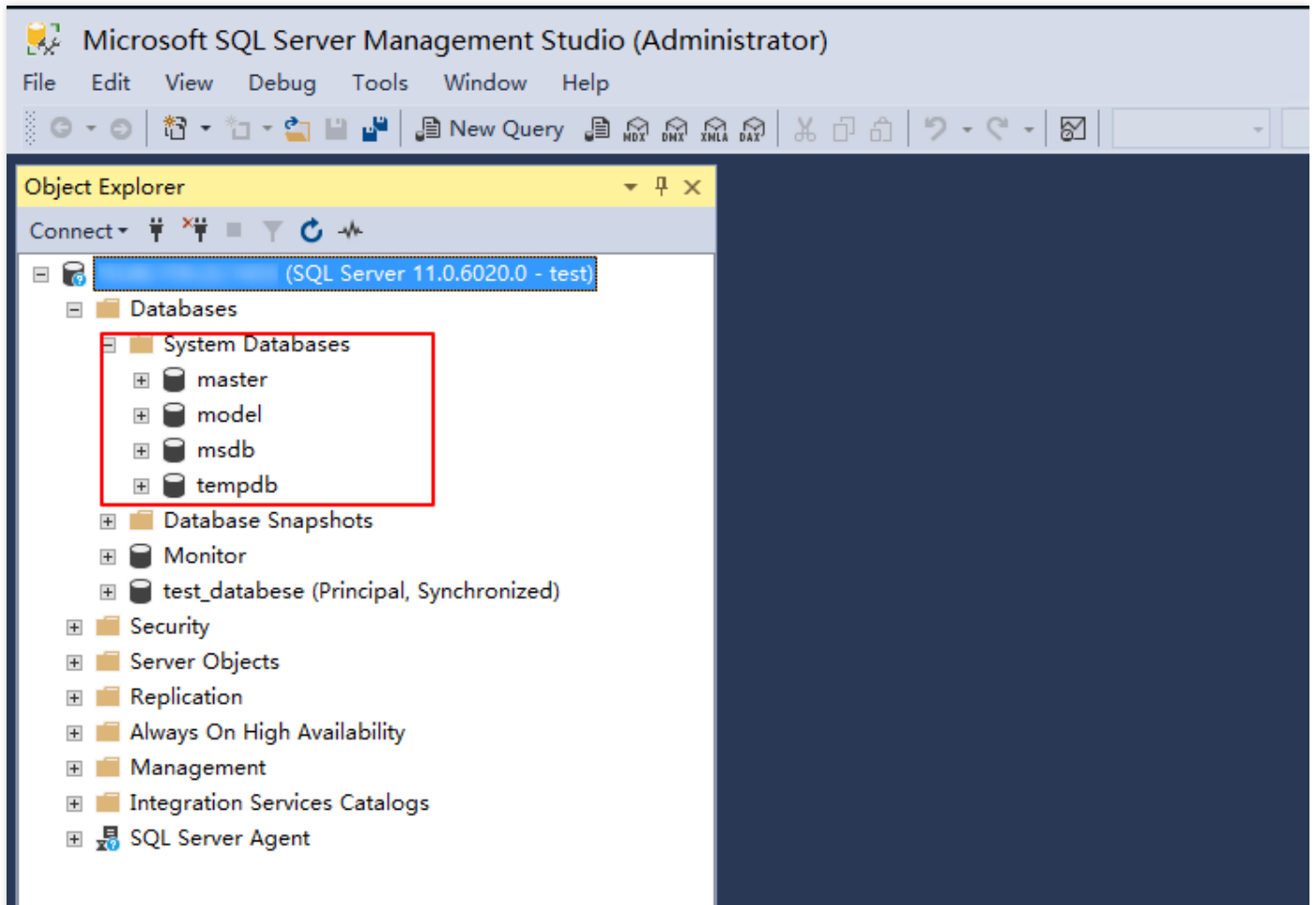
Instance Details		System Monitoring	Account Management	Database Management	Backup Management	Slow log
Basic Info						
Instance ID	mssql-nubeaodh					
Running Status	Running					
Database Type	SQL Server 2008 Enterprise					
Private Network Address	[REDACTED]					
MEM	2GB					
Total Capacity	10GB					
Region	South China (Guangzhou)					
Availability Zone	Guangzhou Zone 2					
Network	Default-VPC					
Project	DEFAULT PROJECT Go to another project					
Creation Time	2019-07-31 19:51:51					
Expiration time	--					

- Start SSMS in the Windows-based CVM instance. In the **Connect to Server** interface, enter the relevant information to connect to TencentDB. Click **Connect** and wait a few minutes before SSMS connects to your database instance.



- Server type: Select Database Engine.
- Server name: Type or paste the private IP and port number of the database instance and separate them with **commas**. For example, if the private IP and port number obtained in the previous step are: 10.10.10.10:1433 , then enter 10.10.10.10, 1433 here. Be sure to use **English punctuation marks**.

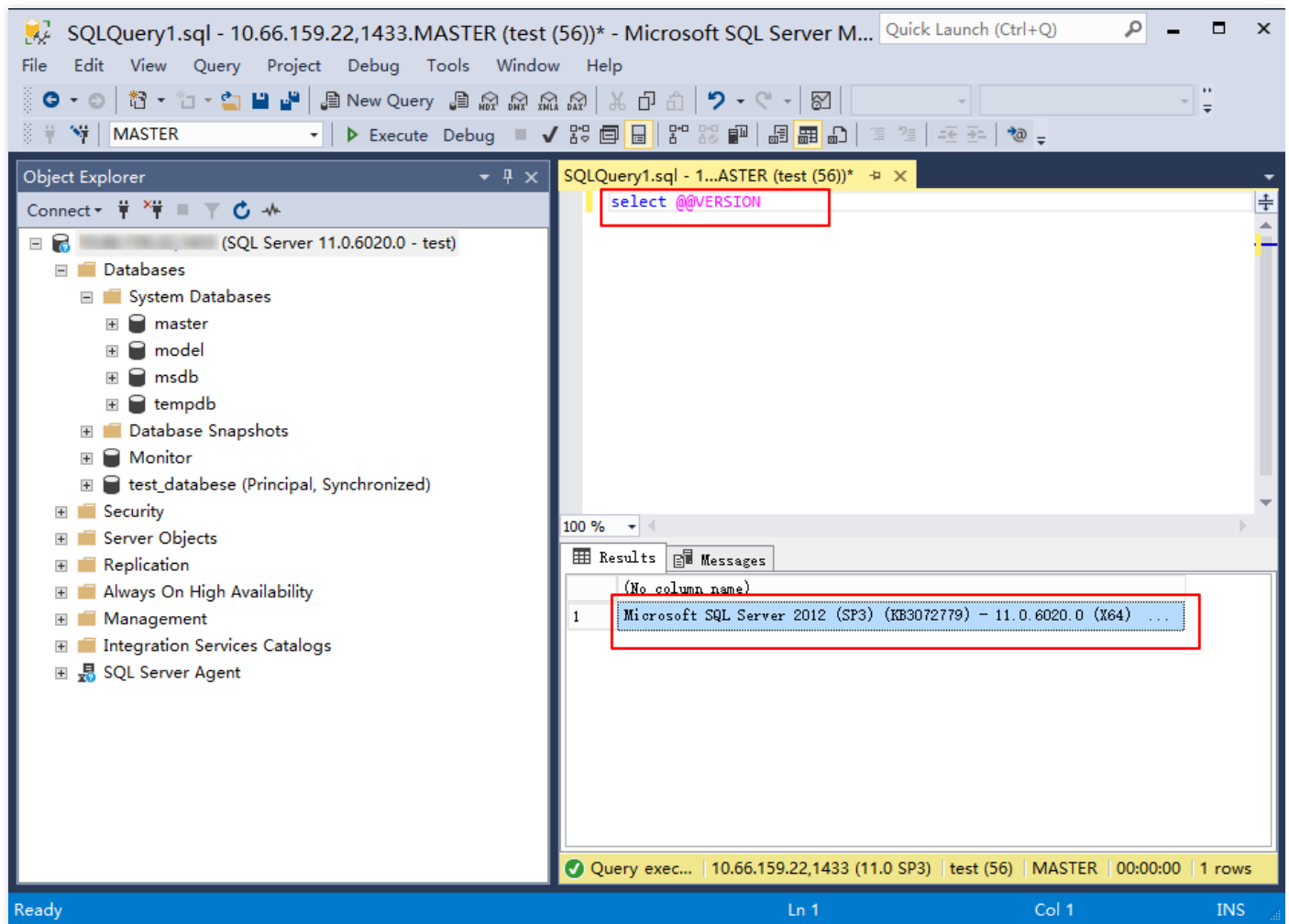
- Authentication: Select SQL Server Authentication.
 - Login and Password: Enter the account and password set when the account of the instance was created. This document uses "test" as an example.
5. Once connected to the database, you can view the standard built-in system databases (master, model, msdb and tempdb) of SQL Server.



6. Now you can start creating your own databases and running queries for them. Select **File > New > Query with Current Connection** and type the following SQL query:

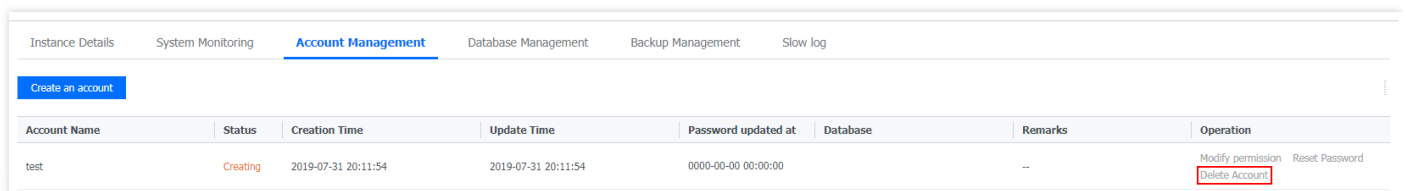
```
select @@VERSION
```

Run the query. SSMS returns the SQL Server version of TencentDB instance.

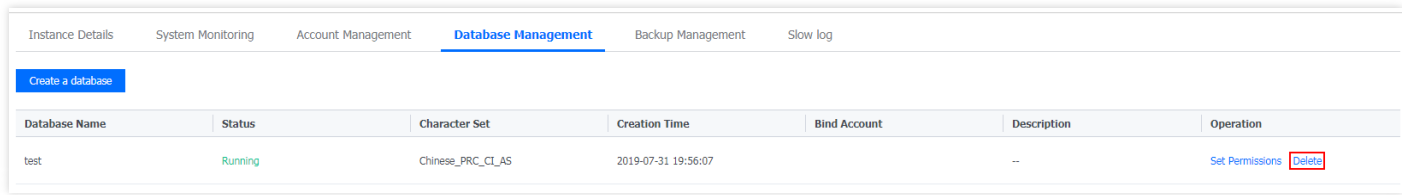


Deleting a TencentDB for SQL Server Instance

1. On the TencentDB for SQL Server instance details page, click **Account Management** > **Delete Account**. It takes time to delete the account. Please wait patiently.



2. On the instance details page, select **Database Management** > **Delete Database**. It takes time to delete the database. Please wait patiently.



The screenshot shows the 'Database Management' tab in the TencentDB for SQL Server console. At the top, there are navigation tabs: Instance Details, System Monitoring, Account Management, Database Management (selected), Backup Management, and Slow log. Below the tabs is a 'Create a database' button. A table lists the existing databases with columns for Database Name, Status, Character Set, Creation Time, Bind Account, Description, and Operation.

Database Name	Status	Character Set	Creation Time	Bind Account	Description	Operation
test	Running	Chinese_PRC_CI_AS	2019-07-31 19:56:07		--	Set Permissions Delete

3. Currently, manual deletion is not supported by TencentDB for SQL Server instance. Service will automatically stop if it is not renewed after expiration, .

Creating and Connecting to a TencentDB for SQL Server Instance (from Local machine)

Last updated : 2019-10-25 11:53:58

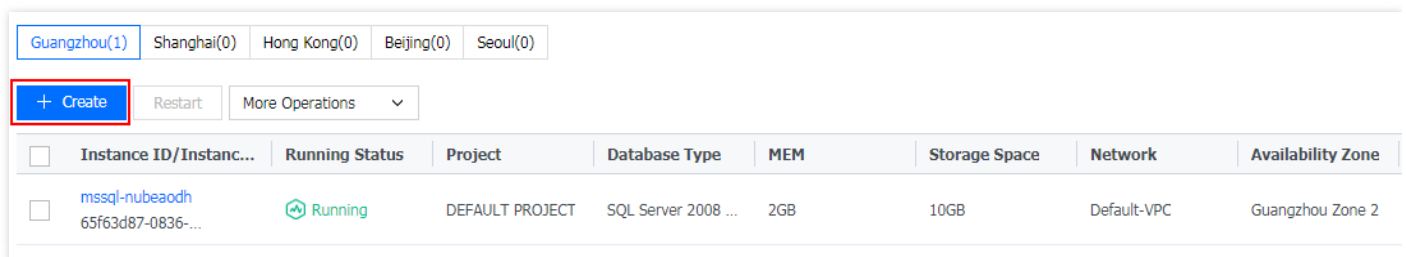
This document describes how to create a TencentDB for SQL Server instance, perform port mapping using a Linux-based CVM instance with a public IP, connect to the database instance using SQL Server Management Studio (SSMS) to run a simple query, and delete the database instance.

If you need to connect to a TencentDB for SQL Server instance using SSMS from a Windows-based CVM instance, see [Creating and Connecting to a TencentDB for SQL Server Instance \(from a Windows-based CVM Instance\)](#).

You must have a Tencent Cloud account before creating a TencentDB for SQL Server instance. For more information about how to register a Tencent Cloud account, see [here](#).

Creating a TencentDB for SQL Server Instance

1. Log in to the [TencentDB Console](#) and select **SQL Server** > **Instance List*.



<input type="checkbox"/>	Instance ID/Instanc...	Running Status	Project	Database Type	MEM	Storage Space	Network	Availability Zone
<input type="checkbox"/>	mssql-nubeaodh 65f63d87-0836-...	Running	DEFAULT PROJECT	SQL Server 2008 ...	2GB	10GB	Default-VPC	Guangzhou Zone 2

2. Click **+ Create** and select the desired configuration of the database on the purchase page. After confirming everything is correct, click **Buy Now**.

- **Billing Method:** Pay-as-you-go.
- **Region** and **AZ:** For more information, see [Regions and AZs](#). This document uses Guangzhou and Guangzhou Zone 3 as an example.
- **Network Type** Basic network and private network are supported. For the difference between VPC and basic network, see [Network Environment](#). This document uses a basic network as an example.

- **Database Version:** SQL Server 2008 R2, SQL Server 2012, and SQL Server 2016 SP1 are supported. The versions available may vary by AZ. This document uses SQL Server 2012 as an example.
- Select an instance specification and required capacity.
- Select the quantity and length of purchase.

TencentDB for SQL Server

Billing Mode Pay as you go

Region Guangzhou Shanghai Beijing Seoul

Detailed Comparison [↗](#)

The cloud service products in different regions cannot communicate with each other through private network. Thus, it is recommended to select the region that is closest to your customers to minimize the access latency.

Availability Zone Guangzhou Zone 2 Guangzhou Zone 3 Guangzhou Zone 4

📍

Network Type VPC Basic Network

Default-VPC Default-Subnet 4093 subnet IPs in total, with 4091 available [↻](#)

You can also go to the console to [Create VPC](#) or [Create Subnet](#)

In the **Guangzhou** region 和 under **VPC Default-VPC** , the servers that can be connected via private network are : 0

Instance version Dual-Server High Availability

Database Version SQL Server 2008 Enterprise SQL Server 2012 Enterprise SQL Server 2016 Enterprise

Instance Specs High I/O 1-core 2 GB M... QPS reference value: 2100

Disk 10 GB

0GB 750GB 1500GB 2250GB 3000GB

Project List DEFAULT PROJECT

Quantity 1

Total Fee **0.13 USD/hour** ([Billing Details](#))

Buy Now

- Return to the SQL Server instance list and view the instance just created. If the running status is **running**, the instance has been successfully created.
- In the **Operation** column of the instance, click **Manage** to enter the instance details page.
- On the instance details page, click **Account Management** > **Create Account** and enter relevant information on the account creation page that pops up. After confirming everything is correct, click **OK**.

The account name and password entered in this step will be used when connecting to TencentDB for SQL Server. Please store them properly. This document uses "test" as an example.

Create a database

Database Name:*

Contain letters, numbers and underscores and start with a letter, with a length of up to 32 chars

Supported Character

Chinese_PRC_CI_AS

Sets*

Authorize Account

 Not Authorize Account Authorize Account

Remarks

Up to 256 chars for remarks

OK

Cancel

6. On the instance details page, select **Database Management** > **Create a Database** and enter relevant information on the database creation page that pops up. After confirming everything is correct, click **OK**. In this step, grant the database's **read-write** or **read-only** permission to the account created in the

previous step.

Create a database ×

Database Name:*
Contain letters, numbers and underscores and start with a letter, with a length of up to 32 chars

Supported Character Sets*

Authorize Account Not Authorize Account
 Authorize Account

Account List:

Unauthorized account	Authorized account	Permissions
<div style="border: 1px solid #ccc; height: 100px;"></div>	<div style="border: 1px solid #ccc; height: 100px;"></div>	<div style="border: 1px solid #ccc; height: 100px;"></div>

Remarks
Up to 256 chars for remarks

Connecting to a TencentDB for SQL Server Instance (from Local Machine)

For data security considerations, TencentDB for SQL Server currently doesn't support public IP. If you need to use a public IP, you can use the port mapping function of SSH2 to connect to, configure and manage an instance from the internet. This document uses SecureCRT as an example for demonstration.

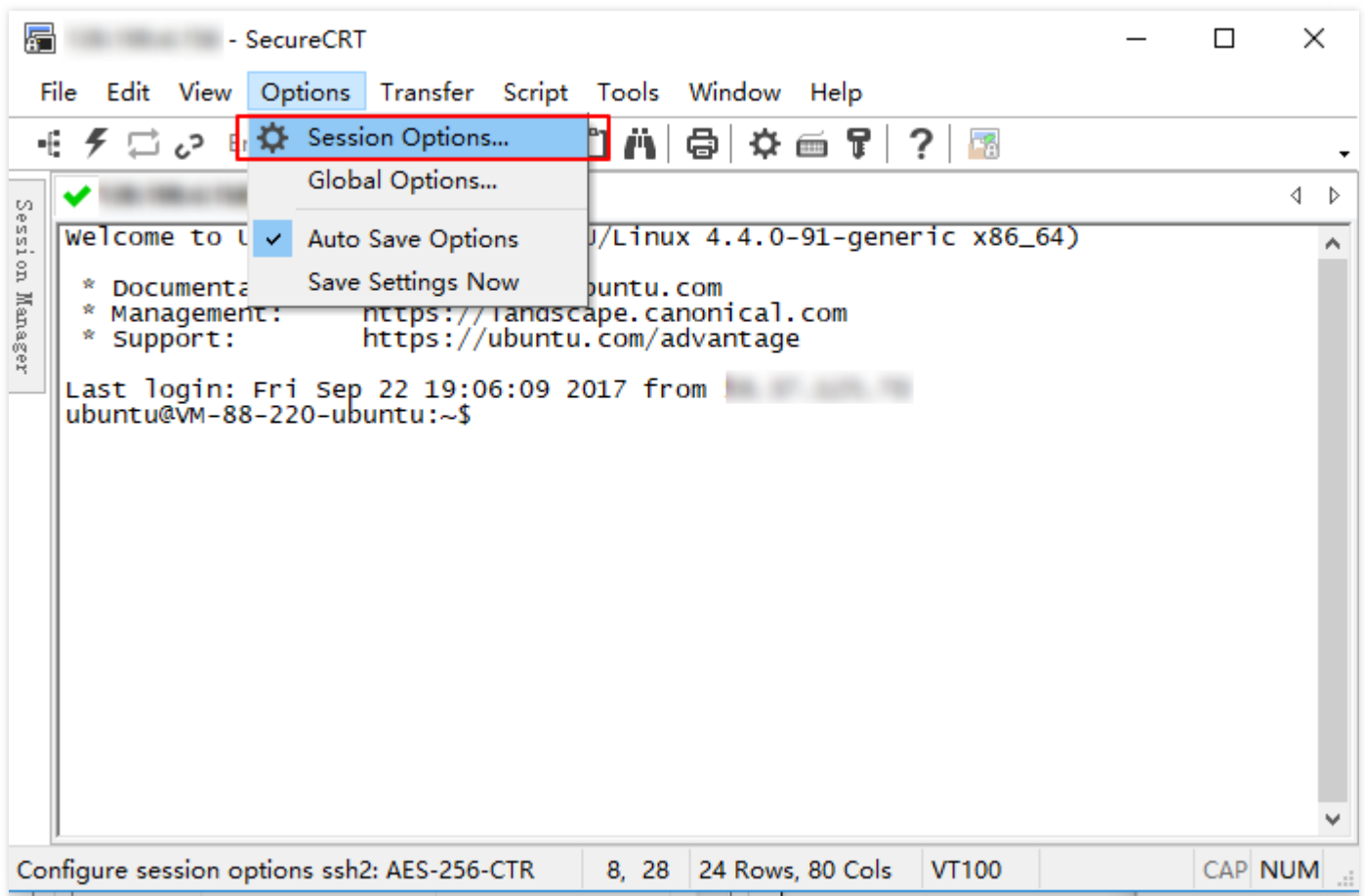
1. On the TencentDB for SQL Server instance details page, click **Instance Details** to view the private IP and port number of the instance. **The private IP and port number here will be used when configuring**

port mapping.

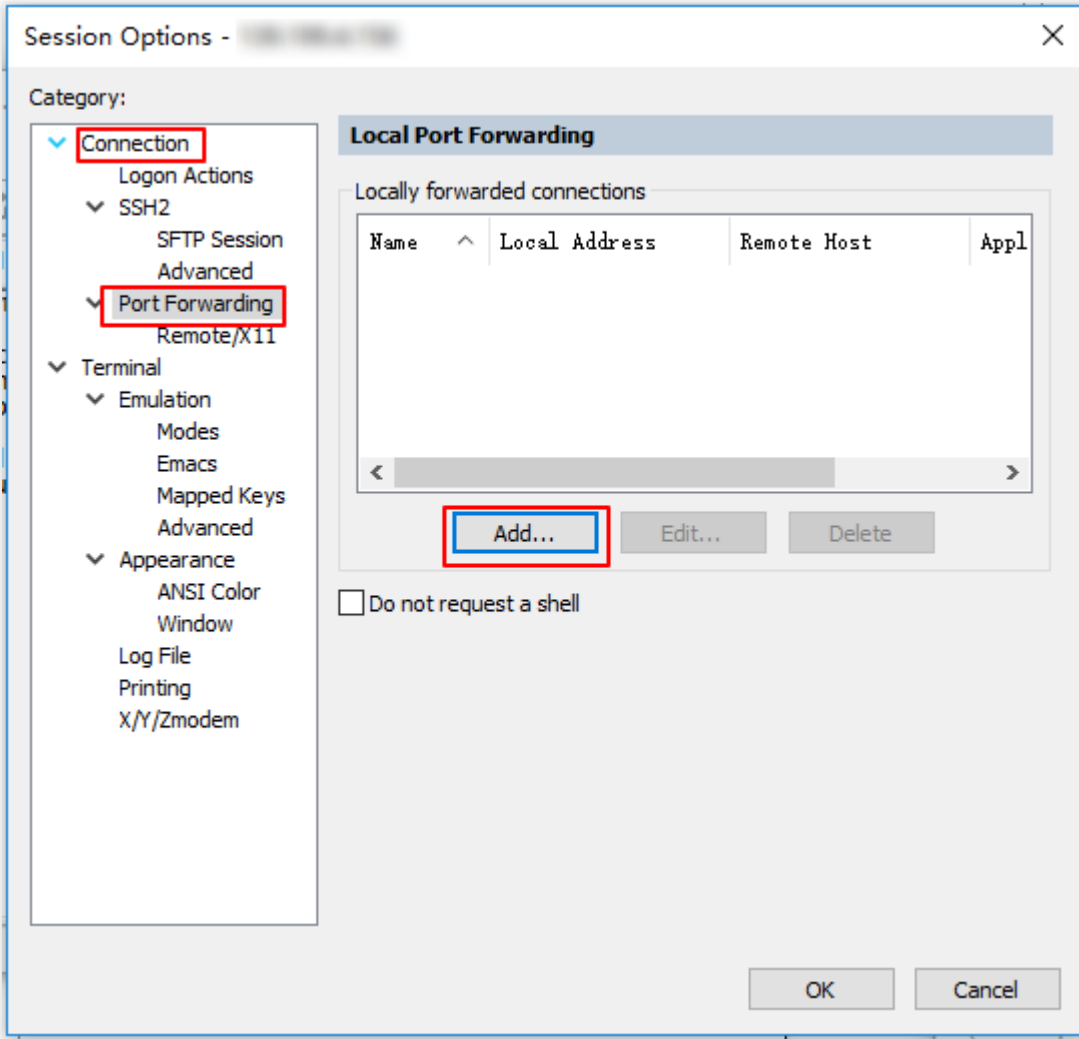
Instance Details	System Monitoring	Account Management	Database Management	Backup Management	Slow log
Basic Info					
Instance ID	mssql-nubeaodh				
Running Status	Running				
Database Type	SQL Server 2008 Enterprise				
Private Network Address	[REDACTED]				
MEM	2GB				
Total Capacity	10GB				
Region	South China (Guangzhou)				
Availability Zone	Guangzhou Zone 2				
Network	Default-VPC				
Project	DEFAULT PROJECT Go to another project				
Creation Time	2019-07-31 19:51:51				
Expiration time	--				

2. Prepare a Linux-based CVM instance **with a public IP**. If you don't have one yet, see [Getting Started - Linux-based CVM](#).
3. Log in to the Linux-based CVM instance locally using an SSH tool such as SecureCRT or PuTTY. For the login method, see [Logging in to a Linux-based Instance](#).

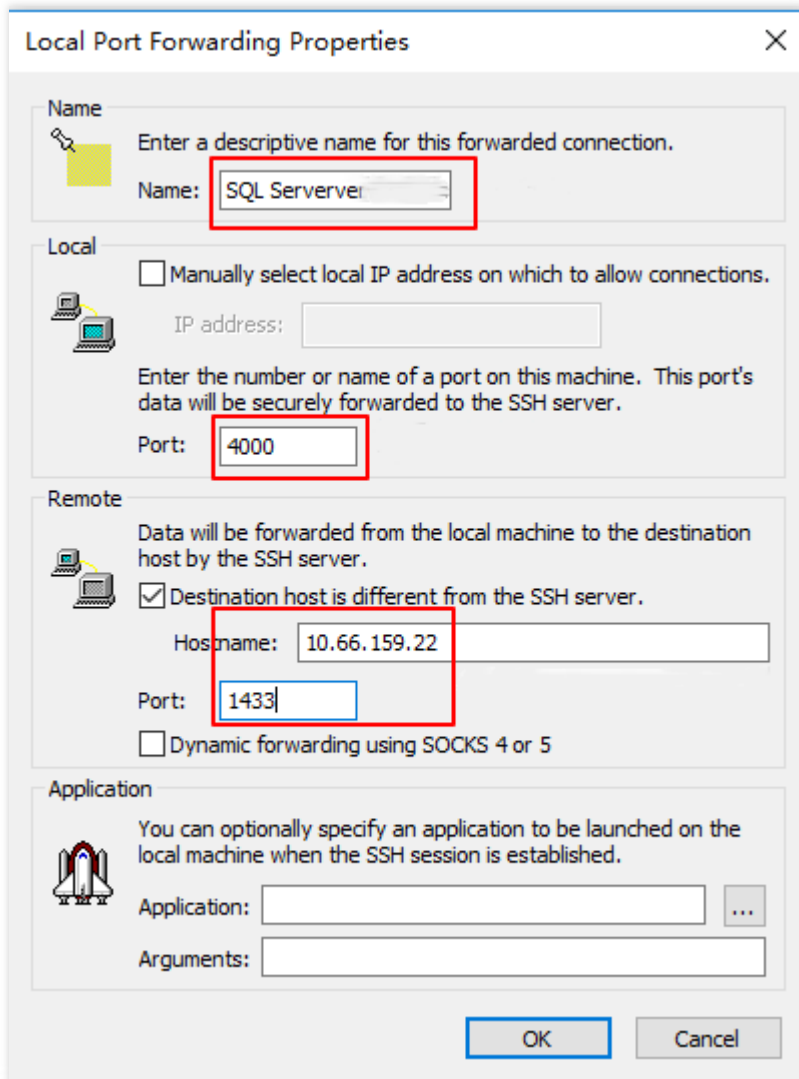
4. Select **Options** > **Session Options** in the SecureCRT menu bar to enter the session properties settings.



5. On the session properties settings page, select **Connection** > **Port Forwarding** > **Add** to enter the port mapping configuration page.

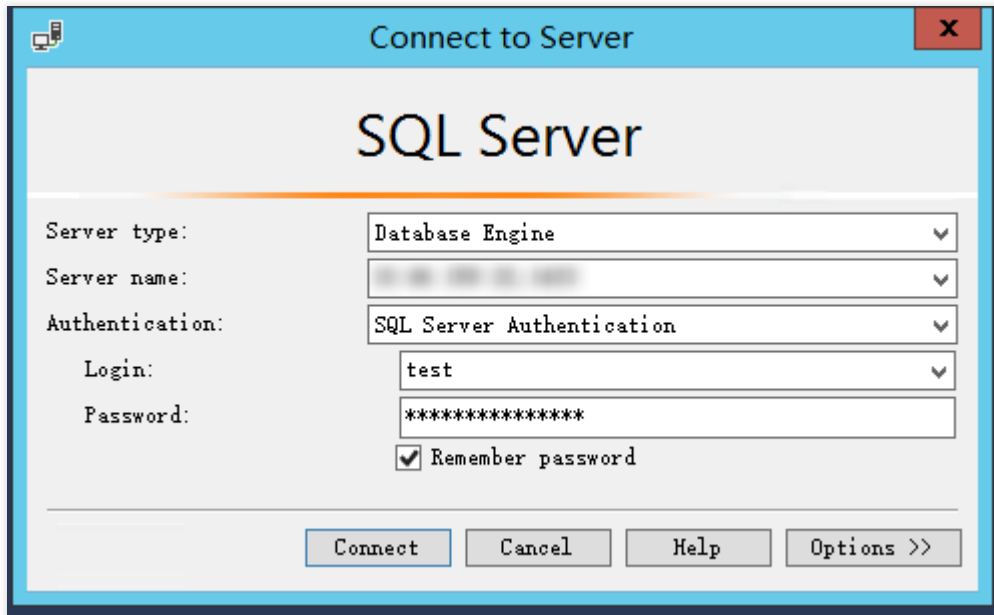


6. On the port mapping configuration page, configure the corresponding parameters.

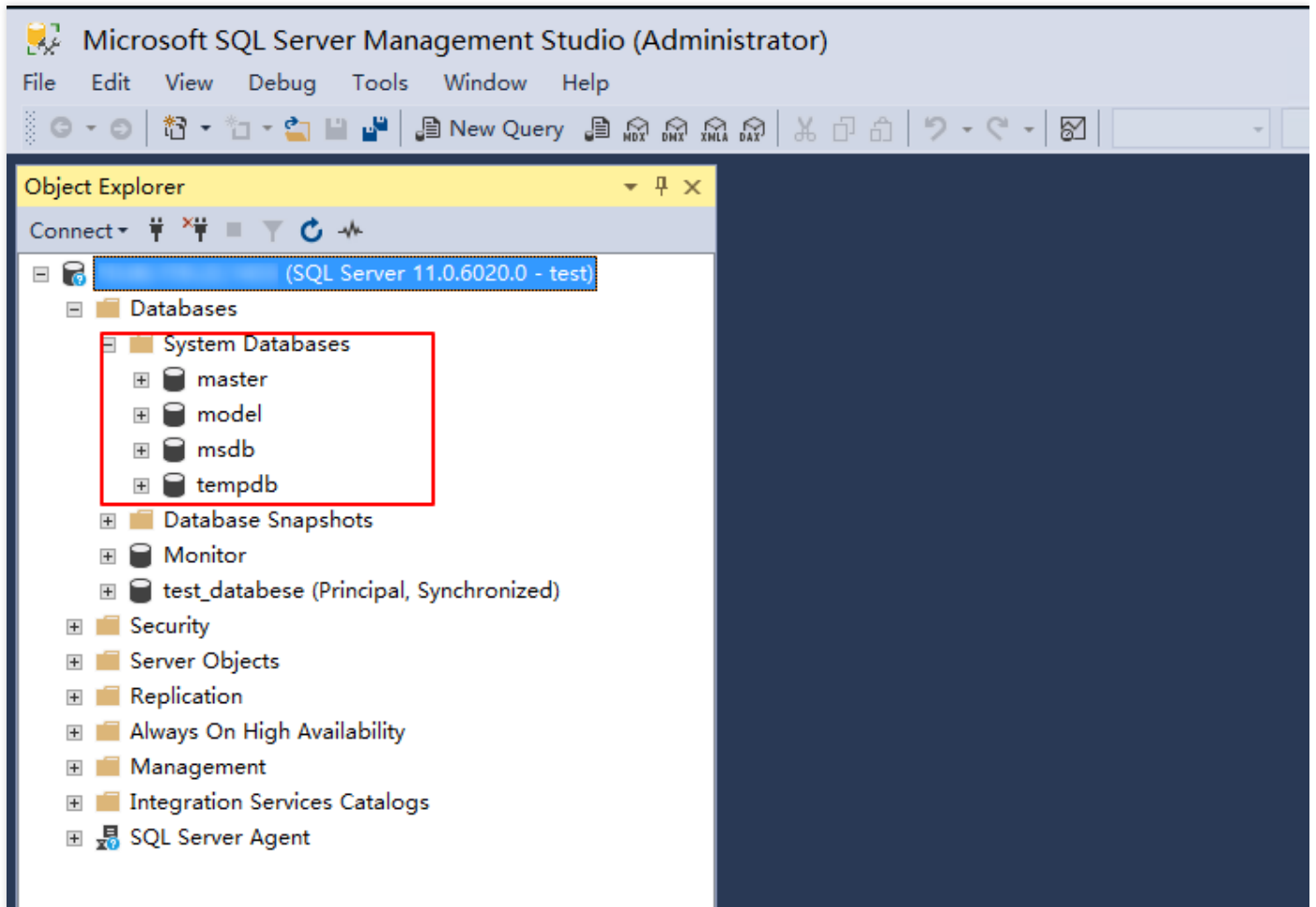


7. Download and install [SQL Server Management Studio \(SSMS\)](#) locally. For more information on SSMS, see Microsoft's official document - [Use SQL Server Management Studio](#).

8. Start SSMS locally. In the **Connect to Server** interface, enter the relevant information to connect to TencentDB. Click **Connect** and wait a few minutes before SSMS connects to your database instance.



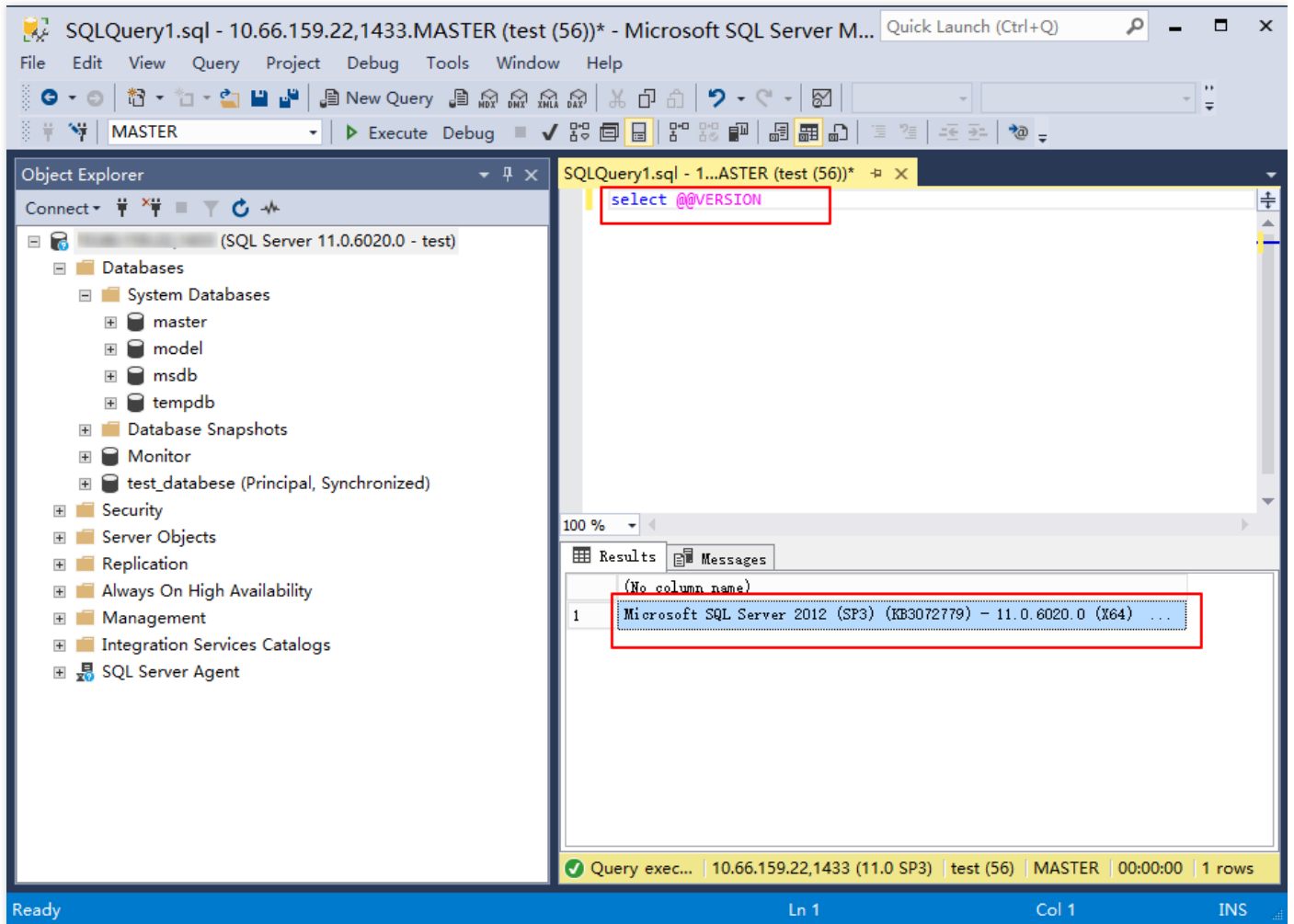
- Server type: Select Database Engine.
 - Server name: Type or paste the local IP address and port number and separate them with a **comma**. The port number needs to be the same as that configured in step 6, such as `10.0.0.1 , 4000` . Be sure to use **English punctuation marks**.
 - Authentication: Select SQL Server Authentication.
 - Login and Password: Enter the account and password set when the account of the instance was created. This document uses "test" as an example.
9. Once connected to the database, you can view the standard built-in system databases (master, model, msdb and tempdb) of SQL Server.



0. Now you can start creating your own databases and running queries for them. Select **File > New > Query with Current Connection** and type the following SQL query:

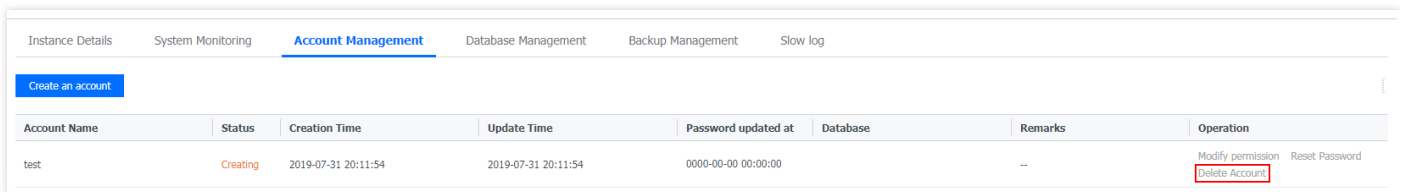
```
select @@VERSION
```

Run the query. SSMS returns the SQL Server version of TencentDB instance.

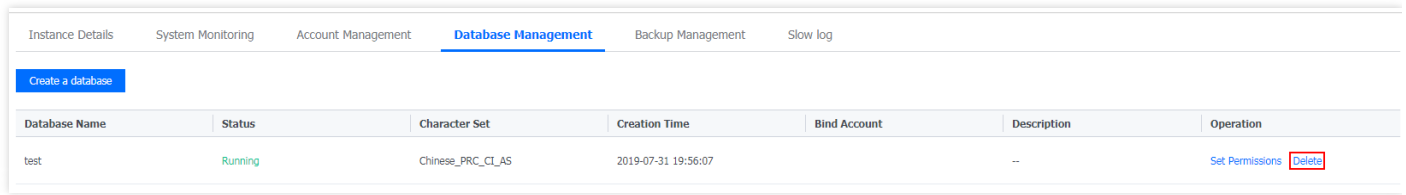


Deleting a TencentDB for SQL Server Instance

1. On the TencentDB for SQL Server instance details page, click **Account Management** > **Delete Account**. It takes time to delete the account. Please wait patiently.



2. On the instance details page, select **Database Management** > **Delete Database**. It takes time to delete the database. Please wait patiently.



Instance Details System Monitoring Account Management **Database Management** Backup Management Slow log

Create a database

Database Name	Status	Character Set	Creation Time	Bind Account	Description	Operation
test	Running	Chinese_PRC_CI_AS	2019-07-31 19:56:07		--	Set Permissions Delete

3. Currently, manual deletion is not supported by TencentDB for SQL Server instance. Service will automatically stop if it is not renewed after expiration, .